

Guide to Arizona's

ROUTE 66



Make new memories
on an old road

GUIDE TO ARIZONA ROUTE 66

If you are looking for pristine natural beauty, rich history, fascinating culture and genuine people, you have come to the right place. Arizona's stretch of Route 66 has it all. In the following pages you will find an easy summary of what you need to know about the different towns and iconic attractions plus suggestions on where to best maximize your time as you plan your Arizona Route 66 adventure, starting in Topock and traveling East, to Lupton. In addition to specific destination information, there is history, travel tips and points of interest.

For ease of use, this guide is divided into sections that parallel the Route through Arizona. Each section is also identified by a corresponding color.

Western Section

- Topock
- Oatman
- Cool Springs
- Kingman
- Hackberry
- Valentine
- Truxton
- Peach Springs
- Grand Canyon Caverns

Central Section

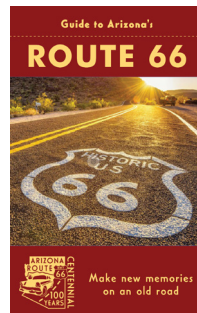
- Seligman
- Ash Fork
- Williams
- Parks
- Flagstaff
- Winona

Eastern Section

- Meteor Crater
- Meteor City
- Winslow
- Joseph City
- Holbrook
- Petrified Forest N.P.
- Lupton

CONTENTS

Welcome	1	Central Section	28
A Step Back In Time	2	Visitor Information Centers	31
AZ RT 66 Timeline	6	Eastern Section	38
Historic Route 66 Association of Arizona	8	Trivia	43
AZ RT 66 Events	9	Fun Facts	48
Natural Wonders	10	Additional Resources	BACK COVER
Family Fun	11	ON THE COVER: ARIZONA ROUTE 66 IN <i>COOL SPRINGS BY NICK FOX</i>	
Hidden Gems	14		
For the Love of Neon	15		
Giant Attractions	16		
Western Section	18		
AZ RT 66 Map	24		
Itineraries	26		



WELCOME TO ROUTE 66 IN ARIZONA!

Welcome to Route 66, the Mother Road in Arizona. On behalf of the Historic Route 66 Association of Arizona we welcome you to the adventure of driving on the Main Street of America, the Mother Road, Historic Route 66. We are delighted that you chose to celebrate Route 66's centennial with us in 2026. Your presence is greatly appreciated, and we hope that you feel welcome and inspired by this magical road and its people.



Imagine Photography

In giving Route 66 its historic rebirth, we the people of America saved a little bit of Americana, a highway of 2448 miles that starts in Chicago, Illinois and ends in Santa Monica, California, covering eight states along the way.

We the people accomplished the impossible, and in doing the impossible we have captured the imagination of the world. During your visit to Arizona, we hope you enjoy getting off the high-speed interstate to drive the longest continuous stretch of historic Route 66, which begins 17 miles east of Seligman at exit 139, and goes all the way to the California border, a distance of 158 miles.

All year in 2026, people from all over the world will be celebrating the 100th anniversary of Route 66, there will be celebrations from Chicago to Santa Monica, making Route 66's anniversary the party of the century.

We hope you will collect happy memories as you travel through Route 66. You may come to Route 66 as strangers, but we hope that you leave as friends. So welcome to Route 66, may it feel like your own.

Please join me in wishing Route 66 a happy 100th birthday and as we look to Route 66's future, may travelers from all over the world continue to get their kicks on Route 66 for another 100 years.

Happy Travels!

Angel Delgadillo

Angel Delgadillo, President Emeritus
Historic Route 66 Association of Arizona

Get social: Check out our social media channels, where we share photos, latest news and travel information. Share your photos by using the hashtag #loveaz66 or tagging us at @loveaz66.



azroute66



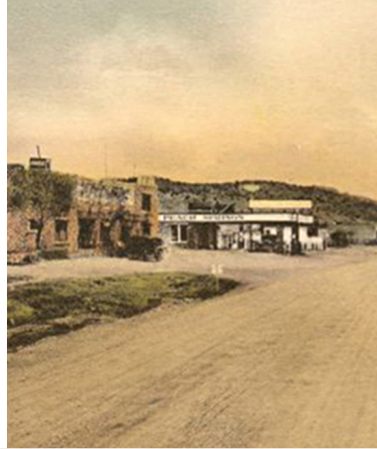
loveaz66

Publisher Historic Route 66 Association of Arizona | 120 W Andy Devine Ave.
Kingman, AZ 86401 | 928-753-5001 | www.historic66az.com

Originally Compiled & Edited by Thin Tread Media (2022)

Revised by Historic Route 66 Association of Arizona (May, 2025)

Photography Efen Lopez/Route 66 Images, David Schwartz/Pics On Route 66,
An Pham, DenellRose Photography, Imagine Photography, 66postcards.com.



Oatman



ROUTE 66 KICKS

1946: Get Your Kicks on Route 66 was recorded by The King Cole Trio and a new phenomenon known as the 'Family Vacation' was born. Americans head west for leisure family road trips on Route 66!

A Step Back in Time HISTORY OF ROUTE 66

In the 1920s, federal highway officials faced a growing demand to develop a numbered road system. The plan was to take a series of regional roadways that linked small towns in America and connect them together into a national highway system. In 1925, the American Association of State Highway Officials approved the new system for marking these highways: roads that went east to west would be assigned even numbers, with important routes having numbers ending in 0. The roads going north to south would get odd numbers, with the main routes having numbers ending in 1 or 5. Cyrus Avery, a prominent Oklahoma businessman, together with John Woodruff, a highway advocate, championed for a diagonal roadway running from Chicago to Los Angeles with the initial number 60. However, Governor William J. Fields, of Kentucky, persuaded federal officials to assign this important sounding east to west number to the highway through





Peach Springs



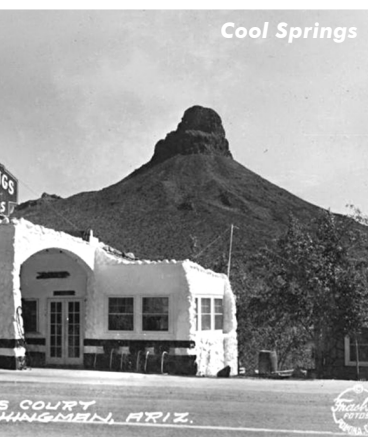
2nd Street, Winslow

his state, leaving the highway connecting Chicago and Los Angeles with the number 62. As expected, a dispute erupted between the Governor and Avery, and their colleagues. During a meeting to settle the issue, the number 66, which hadn't been claimed, jumped out to Avery, and the rest, as they say, is history. The route and number were approved, and on November 11, 1926, U.S. Highway 66 was born. By 1927, the routing of U.S. Highway 66 through Arizona had been laid out, and by 1938, the route in Arizona had been paved, navigating its way through the towns of Oatman, Kingman, Seligman, Williams, Flagstaff, Winslow, Holbrook and Lupton and to the New Mexico border. The entire route would be fully paved by the late 1930s with the 2,448-mile highway linking hundreds of rural communities across eight states from Chicago, Illinois, to Santa Monica, California; the Main Street of American was born.



Two Guns Zoo

Route 66 carried the 'Okies & Arkies' — Depression-era migrants — escaping the Dust Bowl towards the Western promise in the 1930s. It served as the greatest wartime manpower mobilization in the

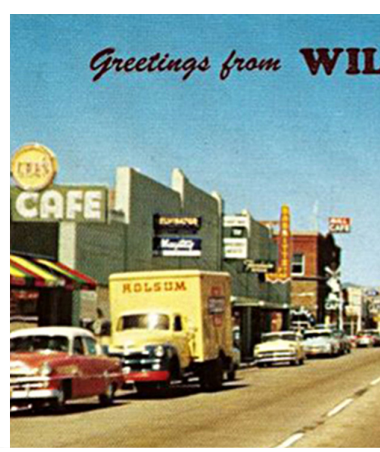
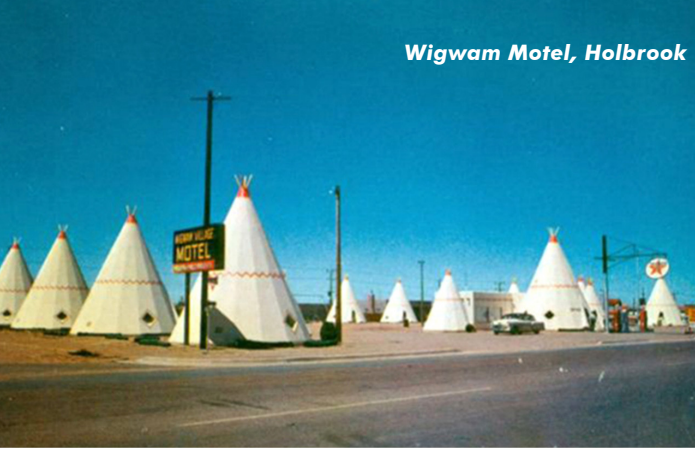


Cool Springs



Williams

Wigwam Motel, Holbrook



ROUTE 66 KICKS

Today, more than 85% of the old road is still accessible to vehicles in Arizona with more than 250 miles of drivable Historic Route 66.

history of the nation during the war years.

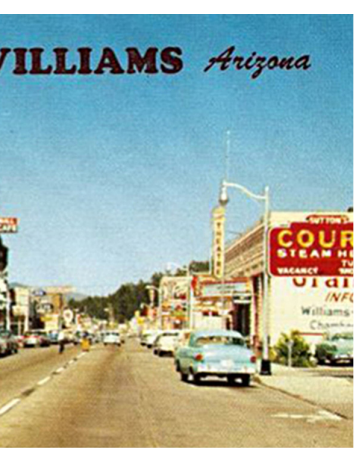
Like the country that the road traversed, Route 66 became a symbol of independence and freedom, and it became forever immortalized in America's consciousness through pop-culture tributes such as John Steinbeck's book *The Grapes of Wrath*, 1939, about the fictional Joad family, which gave the route its most recognized nickname, 'The Mother Road.' Most famously, Bobby Troup's song, *Route 66* (recorded by Nat King Cole) encouraged people to 'Get Your Kicks On Route 66' and the CBS television series *Route 66* brought the route to life in many living rooms of America.

During the fifties and sixties, Route 66 carried postwar motorists and their families embarking on road trips. U.S. Highway 66 had become the epitome of American road travel.

However, the star on Route 66 began to fade once President Dwight Eisenhower enacted the Federal-Aid Highway Act in 1956. Inspired by the German Autobahn that he had seen during World War II, he sought to make U.S. highways more efficient with newer, faster roads. Route 66's last stretch in Arizona was decommissioned when

Welcome to Arizona





Best Western King's Inn, Kingman



I-40 was completed in 1984. And on June 27, 1985, Highway 66 was officially removed from the United States Highway System. All signs were taken down and it was sadly removed from maps. The highway that had been externalized in novel, song, film and television, and that had become a measure of America's pulse, officially ceased to exist.

The opening of Interstate 40 in 1978, bypassing all of the small Arizona towns, engineered their demise when hotels, gas stations and restaurants eventually went out of business due to lack of traffic. The last town to be bypassed was the Arizona town of Williams in 1984. It would take the vision and determination of a small group of volunteers from Arizona Route 66 communities, to bring the lure of rediscovering small-town America and Route 66 back to life again.



Lumber Jack, Flagstaff



Western Hills Motel, Flagstaff



AZ 66 History Timeline

1926

April 30 is when "66" was selected as the number for the new Highway.

November 11, Route 66 is officially commissioned for the Chicago to Los Angeles highway, a principal east to west artery. Four hundred miles of Route 66 is mapped out in Arizona with paving beginning in 1933. Paving is completed in 1938.



1927

The National Highway System is formed and the name 'Main Street of America' is adopted.

1939

John Steinbeck publishes his book *The Grapes of Wrath*, which details the fictional Joad family traveling west on Route 66. In his book, Steinbeck dubs Route 66 'The Mother Road.'

This year also sees the beginnings of World War II. Automobile production ceases, gasoline rationing begins and Route 66 becomes a road for military traffic: transporting troops, supplies, and equipment.

1945

World War II ends, rationing and travel restrictions are lifted and Americans begin traveling for leisure.

1946

American songwriter Bobby Troup, while on a road trip to California with his wife, pens the song (*Get Your Kicks On*) Route 66. The song is recorded by Nat King Cole in the same year. Jack D. Rittenhouse self-publishes *A Guide Book to Highway 66*, the first guidebook of its kind.



1956

President Eisenhower, inspired by the German Autobahn, passes a law to construct a new system of high-speed, limited-access highways. Five new interstates (I-55, I-44, I-40, I-15, and I-10) replace Route 66.

1960

First episode of the Route 66 TV series starring Martin Milner and George Maharis airs on October 7, 1960. After 116 episodes, the show ends on September 18, 1964.

1970

By 1970, nearly all segments of original Route 66 are bypassed by a modern four-lane highway.



1978

Interstate 40 opens and Seligman is bypassed.

1984

The final section of the original road is bypassed by Interstate 40 in Williams.

1985

Route 66 is officially decommissioned. Highway markers are taken down and the route is removed from maps.

1987

The Historic Route 66 Association of Arizona is formed by a small group of people from the Arizona Route 66 communities, led by Angel Delgadillo of Seligman.

1988

The State of Arizona designates the stretch of Route 66 between Seligman and Kingman as a historic highway and a dedication ceremony is held by the Association.

1999

Congress passes an act to create the Route 66 Corridor Preservation Program in response to the recognized need to preserve the rich resources of the historic highway.

2009

Arizona's stretch of Route 66 is named a National Scenic Byway, 'All-American Road', the most prestigious designation possible under the Federal Highway Administration's National Scenic Byways Program.

2026

Route 66 celebrates 100 years. Centennial celebrations will be held in communities all along Route 66.





Arizona Route 66 Archives are housed at Northern Arizona University's Cline Library.

Historic Route 66 Association of Arizona

After witnessing first-hand the devastating economic effects of the construction of I-40 on his hometown of Seligman, Angel Delgadillo, a barber by trade, began looking for ways to bring life back to the town. On February 18, 1987, sixteen representatives from Route 66 towns in Arizona met at the Copper Cart Restaurant in Seligman to organize a group to promote Route 66 as a 'historic' highway. As a result, the Historic Route 66 Association of Arizona was born and the seeds for the revival of the Mother Road were thus planted. The Historic Route 66 Association of Arizona can be credited with supporting, encouraging, and inspiring the creation of Route 66 Associations in all other Route 66 states and subsequently the renaissance of the Mother Road.

Working tirelessly, this non-profit Association has never lost sight of

its mission to preserve, protect and promote the route. Over the years, the Association's efforts have resulted in Arizona's segment of Route 66 being designated as an Arizona Historic Road, a National Scenic Byway, and attaining All-American Road status, the highest National designation possible. The Association continues to regularly assist each of Arizona's Route 66 communities with preservation and marketing projects. For many travelers, seeking out pieces of Arizona's Route 66 has become a sort of pilgrimage of traveling the Mother Road.



AZ 66 Events

Oatman Bed Races, Oatman

January-third Saturday
Five-person teams, with four pushers and one sheet jockey, propel beds through Oatman's main drag at breakneck speeds.
oatmangoldroad.org



Route 66 Fun Run, Seligman, Kingman, Topock

May-Weekend before Mother's Day
Three-day event with over 800 classic and custom cars cruising down the longest stretch of historic Route 66 from Seligman to Kingman to Topock.
historic66az.com



Route 66 Centennial Celebrations

For a complete list of Arizona Route 66 events during the centennial year (2026), visit historic66az.com/centennial or scan the QR code:



Historic Route 66 Car Show, Williams

Mid June
Two-day Classic car show in Historic Downtown Williams.
For more info:
williamshistoricroute66carshow.com

Oatman Sidewalk Egg Fry, Oatman

July 4
Put the saying 'hot enough to fry an egg' to the ultimate test. Using any solar means necessary, participants cook an egg on the ground along Route 66 in Oatman.
For more info:
oatmangoldroad.org

Mother Road Classic Car Show, Flagstaff

Mid-August
Car show located in the tree-lined areas near City Hall.
For more info:
flagstaffarizona.org

Standin' on the Corner Festival, Winslow

Late September
This two-day festival is your perfect opportunity to take it easy amidst great music, tasty food, a kids area.
For more info:
standinontheCorner.org

Kingman Route 66 Fest

Mid October
Enjoy all things Route 66 with live bands, a beer garden, food and craft vendors, classic car show, vintage trailer show - the list goes on and on!
66fest.com



Route 66 UltraRun Kingman, Seligman to Topock

November-2nd Weekend
Journey runners and relay teams compete on the 140 mile stretch of Historic Route 66 from Seligman to Topock with a cut-off of 60 hours.
For more info:
route66ultrarun.com





Painted Desert inside Petrified Forest National Park

An Pham

Natural Wonders

Arizona is known as the Grand Canyon state, and for good reason. Visit the **Grand Canyon** and be in awe of Mother Nature, standing at the top at any of the viewpoints, it is hard to grasp the magnitude of this beautifully textured landscape. Walk where dinosaurs once roamed in the **Petrified Forest National Park**, home to the largest concentration of colorful petrified wood in the world, dating back 211 to 218 million years. The **Painted Desert** is the radiant display of colors. There is no shortage of beauty in Arizona if you enjoy exploring the outdoors. As the sun sets, expect to be blown away by the breathtaking display of hues from the rocks; from orange to deep lavenders to fiery red. Don't miss the **1932 Studebaker** that sits on the border between the two parks, right where historic Route 66 intersected the landscape. Minutes from Route 66 is the world's best-preserved meteorite impact site on Earth, the (Barringer) **Meteor Crater in Winslow**. This natural landmark, a result of a collision between a piece of an asteroid traveling at 26,000 miles per hour and planet Earth approximately 50,000 years ago, is nearly a mile wide and 570 feet deep and amazing to see. Discovered by lumbermen in 1915, the **Lava Tube Caves in Flagstaff's Coconino National Forest**, are the longest lava tubes in Arizona. At about a mile long, a highest ceiling point of 30 feet and about 100 feet in elevation from the opening to the end, these tunnels are a real natural marvel and not to be missed.



David Schwartz

Petrified National Forest

Travel Tip: The Petrified Forest National Park is the only national park that old Route 66 passed through.



An Pham

Meteor Crater Visitor Center



Dinosaurs at Stewart's Petrified Wood

Efren Lopez

AZ 66 Family Fun

Route 66 is a nostalgic adventure as well as a geography and history lesson for the whole family, with fun-for-all places and activities. Start your adventure with a visit to feed **wild burros in Oatman**. The younger set will enjoy hand-feeding these descendants of the original beasts of burden with ‘burro chow’ (hay cubes). Check out the **Arizona Route 66 Museum at the Kingman Visitor Center** and learn about the fascinating history of the Mother Road. The featured murals, photos and dioramas vividly capture life on Route 66. Both kids and adults will learn plenty. **The Snow Cap Drive-In in Seligman** is a must. The puns and playful visual pranks will surprise and delight, while exploring the property, cluttered with vintage autos and kitschy artifacts, makes for loads of fun. The food is pretty tasty, too. Take your family road trip up a notch with a visit to the untamed Arizona wilderness at **Bearizona in Williams**. Watch bears, bison and wolves in their natural habitat from the comfort of your car — up close and right outside your vehicle. And for the brave, **Williams** also has a fun **Canyon Coaster!** Take a deep look into space at the **Lowell Observatory in Flagstaff**, famed for discovering Pluto, and then end your family trip on a high note with a visit to the **Jack Rabbit Trading Post, Wigwam Motel and Stewart's Petrified Wood Trading Post**, all in eastern Arizona. These quirky places are guaranteed to delight the whole family.




Oatman burro

Efren Lopez



Route 66 Zipline

Route 66 Zipline

 **Travel Tip:** Avoid feeding the burros carrots as it makes the burros unhealthy. Opt for ‘burro chow’ instead, which is sold in town.



An Phom

Ash Fork Museum

AZ 66 Hidden Gems

Looking for somewhere to go that's off the beaten track? The quiet streets and time-worn buildings of **Ash Fork** will offer you a glimpse into a once thriving town that time and the I-40 forgot. Known as the Flagstone Capital of the World, clues to Ash Fork's past can be found at the **Ash Fork Route 66 Museum**, a small but historically accurate museum with fantastic displays on the town's railroad history — that includes a Harvey House! — and of Route 66. Midway between Williams and Flagstaff, is the small village of **Parks**, which sits on an old alignment of Route 66; currently used as a local access road. Once home to a gas station, school, restaurant and post office, all that remains now is a general store, a post office and two excellent gems: an abandoned **1931, 0.85 mile stretch of original asphalt pavement**, which is only accessible to pedestrians and cyclists, and an abandoned **1921, 0.35 mile long roadway** that was designated as Route 66 in 1926. Pressed for time? Skip the Painted Desert and enjoy the eye-catching and colorful swirling patterns of the **Little Painted Desert County Park**. An easy 20-minute drive from **Winslow**, this scenic beauty is a great spot to catch the sunset and listen to the wind. Savor the freedom of the open road and take the **Post 1931 drivable dirt Route 66** (Exit 343 to Exit 346) that crosses the 1930, 269-foot **Querino Canyon Bridge**. It is rough and dusty, but it will give you a vivid picture and taste for the historic road. Avoid this dirt option when wet.



An Phom

Burma-Shave Signs near Seligman



Drivable dirt 66 (Exit 343 to Exit 346)



Efren Lopez

Snow Cap Drive-In, Seligman

For the Love of Neon

Nothing evokes the nostalgia of Route 66 more than classic neon signs. Back in Route 66's heyday, the brilliant colors, flashing lights or moving figures of neon signs lured travelers off the road, like beacons in the dark night, to restaurants, bars and motels. Arizona's 66 has some of the best of these gorgeous relics. So, plan to spend a night or two in some of these towns to properly experience the glowing visual language of a bygone era.

The **Kingman Club** sign with its retro **Neon Cocktail Glasses** also stands proud, lighting up East Beale Street. However, the sign of the **Hilltop Motel** could be Kingman's coolest vintage neon sign yet. Situated right on Route 66 in **Flagstaff** is the **Museum Club**. The club's amazing **guitar neon sign** is one of the most famous landmarks in the town, offering a nostalgic slice of old-school Americana. If you love neon, then a night spent in **Seligman** is a must. The iconic sign of **The Historic Route 66 Motel**, the dramatic glow of the **Supai Motel** sign, and the distinctive V-shaped sign of **Stagecoach 66 Motel** all conjure up pleasant vestiges of the past.



DenilRose Photography

Neon Heart Sign, Kingman



Efren Lopez

Museum Club, Flagstaff



An Pham

Supai Motel, Seligman



Travel Tip: The Museum Club operates as a bar with live music and has daily theme nights that include; Line Dancing and Karaoke, Dime Beer nights, Happy Hour, and Open Mic nights.

AZ 66 Giant Attractions

Arizona's stretch of Route 66 is well known for its abundance of scenic and historic attractions. It also has plenty of quirky and fun sights that dot the landscape, including all things large. Check out some of the giant and unique roadside attractions and statues we've listed below. See how many you can visit during your time driving Historic Route 66 in Arizona.

Route 66 Drive-Thru Shield in Kingman

The Route 66 Drive-Thru Shield is a striking, permanent installation featuring neon lights that illuminate at sundown, creating a memorable photo opportunity for visitors day and night. Initially a temporary feature at the annual Route 66 Fun Run, the shield became a beloved symbol, leading to the installation of this permanent version. It's a must-visit for Route 66 enthusiasts, providing a perfect backdrop for capturing the spirit of this historic highway.



Efren Lopez

Giant Head in Antares

Where else would you find a green 14-foot-tall Easter Island-style tiki head? Well, about 15 miles east of Kingman. Find **Giganticus Headicus** (GH) standing guard outside the A-framed building that houses the Antares Visitor Center and gift shop. Created by artist Gregg Arnold, using wood, metal and stucco, GH spends his days welcoming visitors and watching over the Mother Road. He also serves as the perfect backdrop for an Instagram worthy selfie. Take GH home with you by grabbing your own miniature of the giant green head from the gift shop.

Giant Muffler Man in Flagstaff

The Northern Arizona University is home to two 20-foot-tall muffler men nicknamed Louie. One stands outside the J. Lawrence Walkup Skydome next to the box office and is considered the very first Muffler Man ever produced. The second one, which used

to be inside the stadium just behind the end zone, is now in storage for repairs. Known as the **Lumberjack Muffler men**, sporting a double sided axe, the giants were donated to the University in the 1970s after the restaurant they stood guard at, the Lumberjack Cafe, changed hands and was renamed Granny's Closet.





Giant Rabbit in Joseph City

One of Arizona's best-known roadside attractions is the **Jack Rabbit Trading Post**, home to the iconic "Here It Is" billboard, the last of the famous billboards that taunted motorists with a mileage countdown to the Post. It is also home to a giant **saddled fiberglass jackrabbit** that you can sit on or take photos of. This is kitsch at its finest. First opened in the 1940s, the Jack Rabbit Trading Post is still in operation today and an iconic stop for any Route 66 traveler. So step into the gift shop, stay awhile and enjoy some genuine Route 66 hospitality.

Giant Dinosaurs in Holbrook

Located in the heart of where dinosaurs once

roamed, Holbrook can be billed as the dinosaur capital of the world with concrete replicas of these prehistoric creatures scattered around the town. The largest collection can be seen in the yard of the **Rainbow Rock Shop**. The dinosaurs, ranging in size from baby dinos to over 25 feet tall, reportedly took the owners over 20 years to create! Stop by the **Painted Desert Indian Center** and **Stewart's Petrified Wood Shop** for more of these homemade looming giants.

Whispering Giant in Winslow

In 1972, Peter Toth, a Hungarian born artist, began carving his Trail of Whispering Giants across the United States. He said, "I love America. It's the greatest nation in the world and I want to give a little of myself to my adopted country and to this important cause I believe in. My



monuments are my way of saying what I must say. They are made to remind people of the contribution of the Indian to this great country." Starting in La Jolla, California, Toth decided to carve one statue for each state, with Arizona as No 33.



WESTERN SECTION

Arizona has more than **250 miles** of drivable Route 66 and is home to the longest unbroken stretch of the old highway in existence — 158.7 miles from the California state line to just west of Ash Fork. The **Western Section** of the Mother Road in Arizona navigates (West to East) through the towns of **Topock, Oatman, Cool Springs, Kingman, Antares, Hackberry, Valentine, Truxton, Peach Springs** and the **Grand Canyon Caverns**.

TOPOCK

Sitting on the edge of the Colorado River, the city of Topock and its Golden Shores area started out as a settlement in 1883 when the Atlantic and Pacific railroad built a wooden bridge across the river. In 1916, the wooden bridge was replaced by the **Trails Arch Bridge**, which was featured in the movie *The Grapes of Wrath* and still stands today even though it stopped serving traffic in 1948. **Topock66 Colorado River** serves home-made meals and has a refreshing pool to cool off from the Arizona heat. Take a boat, canoe, or kayak through the **Topock Gorge**, whose rocky cliffs provide a stunning view, while the **Topock Marsh** offers plenty of fishing opportunities.



Trails Arch Bridge

Efren Lopez



Oatman Hotel

OATMAN

Named after Olive Oatman, who was kidnapped by the Apache, sold to Mojave Indians and later rescued near the current site of



Gunfighters

Joy Reddig

the town, Oatman was founded back in 1863 as a small mining town. Gold was struck in 1915, resulting in a population boom. While the boom didn't last, and a 1921 fire almost burnt it to the ground, the town's wild aesthetic and location continued to cater to Route 66 travelers. Today, you can **shop, feed wild burros** or watch the afternoon **wild west shootout** in town. Have some cowboy fun. Visit the **Oatman Hotel** to see thousands of dollar bills that have been signed and tacked onto the walls and ceiling. The Oatman Hotel no longer functions as an inn, but you can visit the **Honeymoon Suite that Clark Gable and Carol Lombard** stayed in.



Efren Lopez

An Oatman resident

COOL SPRINGS

Cool Springs camp and service station opened its doors to Mother Road travelers in the 1920s, offering a warm meal, gas for your car and eight cabins for guests to spend the night. While it fell into ruin over the years, the property was rebuilt to its former glory in the early 2000's. Today, **Cool Springs Station** offers plenty of unique Route 66 and Cool Springs memorabilia for sale, with artifacts and photos of the original Cool Springs on display.

Travel Tip: Oatman Highway has 191 curves in 8 miles. The narrow mountain pass isn't RV friendly or recommended for vehicles towing trailers.



Cool Springs Station

Sitgreaves Pass: The **Oatman Highway** is the most intimidating section of Arizona's Route 66, characterized by steep grades, hairpin curves and drop-offs of several hundred feet. Keep to the speed limit (10-15 mph in some spots) through **Arizona's Sidewinder** with 191 curves, turns and switchbacks. **Sitgreaves Pass**, the summit at 3,586 feet (1093m), offers stunning views of the rugged mountain side and is worth a stop.

Sitgreaves Pass





Kingman The Heart of Historic Route 66

DenellRose Photography

Kingman boasts of having the longest remaining preserved stretch of Route 66, a section that runs right through its downtown area, earning it the nickname “The Heart of Historic Route 66”. Kingman also serves as a gateway to **Las Vegas** and the **West Rim of the Grand Canyon**. Stop in at the **Kingman Visitor Center**, the home of the Historic Route 66 Association of Arizona, and get your copy of the **Arizona 66 Passport**, an excellent compact guide, learning tool and great souvenir. History buffs will enjoy life-size dioramas, photos and vivid murals on display at the **Arizona Route 66 Museum**. Also in Kingman, an interesting collection of electric vehicles are displayed in the world's only **Electric Vehicle Museum**. The **Kingman Railroad Museum** highlights historical railroad artifacts and model trains, while the **Mohave Museum of History and Arts** presents the history of Northwestern Arizona. Ready for a journey to the past, visit the **Bonelli House**, one of Kingman's

earliest homes that's been furnished to fit the period. Take a walking tour of **Historic Downtown Kingman** which covers more than 40 sites and buildings on the National Registry of Historic Places. Downtown Kingman has many local eateries and breweries. Visitors can experience Kingman's natural beauty by hiking the **White Cliffs Wagon Road Trail** and touch part of the old wagon road. A short drive out of town takes you to beautiful **Hualapai Mountain Park**, home to a variety of wildlife including dozens of bird species, mule deer and elk.

Did You Know? Character actor Andy Devine is best known for appearing in western movies such as *Stagecoach* and *Grand Canyon Trail* and in TV shows such as *The Adventures of Wild Bill Hickok* and *Gunsmoke*. He was born in Flagstaff but raised in Kingman. The main street in Kingman which is Route 66, was named **Andy Devine Avenue** after him in 1955.

EAT

- **Mr. D’z Route 66 Diner** – Walk through a time warp back to the glory days of U.S. Route 66 at this 50s inspired diner.
- **Floyd & Co Real Pit BBQ or Wood Fired Pizza** – Located in historic downtown Kingman, this restaurant offers a variety of family recipes.
- **Dambar & Steak House** – Located right on Route 66 and housed in a building originally built in the 1930s, this is the place to go for huge steaks in an authentic old west style setting. There is a “Damn Bar” story behind the name. Ask about it.
- **Kingman Airport Café** – American style breakfast and lunch café located right on the runway where you can watch the planes.

DRINK

- **Grand Canyon Brewing & Restaurant**
- **Hive Five Meadery**
- **Rickety Cricket Brewing & Restaurant**
- **Black Bridge Brewery**
- **Desert Diamond Distillery**

DO

- **Visit Lewis Kingman Park**, named after Lewis Kingman, who gave the town its name, this features an oversized **Route 66 Leaning Shield**, dog park and restrooms, the perfect spot to stretch your legs.
- **Hike White Cliffs Wagon Road Trail**, part of a wagon road used in the later 1800s to bring gold ore to the railroad.
- **Track down colorful murals, neon signs, and art installations** in Historic Downtown Kingman.
- **Climb aboard Steam Engine #3759** in **Locomotive Park** near Kingman’s **Welcome Arch**.

Mr. D’z Route 66 Diner



An Phom



Grand Canyon Brewing Kingman



An Phom

Guardian Angel Exhibit in the Visitor Center

WESTERN SECTION

ANTARES

Ranchero Motel opened its doors in 1965 with a restaurant, bar, Shell gas station and plenty of rooms for weary travelers to spend the night. While it no longer functions as a motel, the structure still stands today, with its intricate triangular sign, steep roof and kitschy road-side attraction —

Giganticus Headicus, or GH for short. GH was created back in 2004 by Gregg Arnold, and the large green tiki head provides the perfect photo op. **Giganticus Headicus at Antares Point** includes outdoor art installations.



Giganticus Headicus

Eifren Lopez

HACKBERRY

The **Hackberry General Store** packs a lot of character. Originally opened in 1934, it closed in the 1970s when the town was bypassed by the Interstate. In 1992, the late Route 66 artist and cartographer **Bob Waldmire** reopened its doors and turned the former general store into a **Souvenir Shop**, selling quirky Mother Road memorabilia. Today, the shop is a popular travel destination and is filled with artifacts from the 40s-60s. Outside, you'll find **old gas pumps**, **vintage signs** and



Hackberry General Store

antique cars, including a **1929 Studebaker Rat Rod**, which speaks of a bygone era of roadside travel.

Did You Know? Hackberry General Store served as the inspiration for the Radiator Springs Curio Shop in the 2006 Pixar Movie *Cars*.

VALENTINE

Valentine was a shot location for the 1969 movie *Easy Rider* and is prominently featured on the movie poster. **Keepers of the Wild**, relocated near Valentine in 2006, is an animal sanctuary that houses over 150 rescued animals, including tigers, lions, bears, wolves, reptiles, and birds. Weekend travelers can stop at the **Old 76 Station**, a nostalgic gas station now serving drinks.

TRUXTON



Efren Lopez

The eerie silence over little Truxton belies the fact that the town was once a hub of activity. Unique to its charm is the array of operational and abandoned buildings. The giant pale-blue signpost of the **Frontier Motel and Cafe** serves as a beautiful relic of what once was and still is a favorite photo op. The faded “CAFE” script on the outer wall serves as a perfect selfie spot. Still in business as an auto repair shop is **Truxton Station**, originally opened in 1950 as **Whiting Brothers**, part of a gas station chain founded in Arizona in 1926. The **Gas & Grub**, formerly the Cowgill’s Trading Post, which holds the kitschy **Cowgill’s Signpost** with rectangular signs that give the direction to a few cities, such as Saint Louis and Oklahoma City, is also still in operation.

Did You Know? **Truxton** was named after Truxtun (note the spelling), son of Lt. Edward Fitzgerald Beale, who found a spring at Truxton while surveying a wagon road from Fort Smith, Arkansas, to California, in 1882-83.



Keepers of the Wild



ROUTE 66 KICKS

The Frontier Motel and Cafe, built by Alice Wright in the 1950s, was operated by Mildred and Ray Barker from 1957 to closing in 2012.



Truxton Station

WESTERN SECTION

PEACH SPRINGS

Peach Springs is the administrative headquarters of the Hualapai Nation and has plenty of fun activities that make it a worthwhile stop along the Mother Road. Experience the wildest way to visit the **Grand Canyon** with an invigorating **Whitewater Rafting Tour** on the Colorado River with the **Hualapai River Runners**. And after a full day, why not plan to stay at the **Hualapai Lodge**?

GRAND CANYON CAVERNS

Take a 210-foot-deep below ground exploration tour and experience the labyrinth of limestone passageways filled with beautiful rock formations of stalagmites and stalactites at the **Grand Canyon Caverns**, the largest dry cavern in America. Tour options include a standard 45 minute tour, truncated ADA accessible tour, and an expanded exploratory tour. Wear comfortable shoes.

Did You Know? The caverns were discovered in 1927 and were initially called Coconino Caverns, which later changed to Dinosaur Caverns before becoming known as the **Grand Canyon Caverns**.



An Pham



Hualapai River Runners



Grand Canyon Caverns & Inn

Western Section Points of Interest



- Topock66 Colorado River**
 - Oatman**
 - Oatman Hotel and Cafe
 - Wild Burros
 - Gunfight Reenactments
 - Oatman Hwy**
 - Arizona's Sidewinder
 - Shaffer Fish Bowl Spring
 - Sitgreaves Pass
 - Cool Springs**
 - Kingman**
 - Kingman Visitor Center
 - Arizona Route 66 Museum & Guardian Angel Exhibit
 - Route 66 Drive Thru Shield
 - Historic Beale Street
 - Mohave Museum of History & Arts
 - Locomotive Park
 - White Cliffs Wagon Road Trail
 - Giganticus Headicus at Antares Point**
 - Hackberry General Store**
 - Valentine**
 - Keepers of the Wild
 - Old 76 Station
 - Truxton**
 - Peach Springs**
 - Hualapai Lodge
 - Osterman Station Historic Site
 - Grand Canyon Caverns**
- ## Side Trips
- Las Vegas & Hoover Dam
 - Lake Havasu City
 - Chloride Ghost Town
 - Hualapai Mountain Park
 - Grand Canyon Skywalk

1 TOPOCK/GOLDEN SHORES EXIT 1

- Beginning/End of the longest remaining continuous stretch of Route 66 to Crookton Rd. (158 miles)
- Old Trails Arch Bridge
- Havasu National Wildlife Refuge
- Colorado River Recreational Area

2 OATMAN MILEPOST 25

- Old West gold mining town in the Black Mountains where burros own the streets
- Daily gunfights

3 COOL SPRINGS MILEPOST 33

- Restored 1926 Mobil gas station
- Roadside attraction/museum
- Site of the movie, *Universal Soldier*

4 KINGMAN EXITS 48-53

- Heart of longest remaining stretch of Route 66
- Powerhouse Visitor Center & Route 66 Museum, Bonelli House & Mohave Museum
- Historic Downtown Walking Tour
- Drive Thru Shield
- Water Tanks

5 ANTARES MILEPOST 75

- Giganticus Headicus

6 HACKBERRY MILEPOST 80

- Hackberry General Store
- Hackberry School

7 VALENTINE MILEPOST 85-87

- Valentine Indian School
- Keepers of the Wild Animal Sanctuary

8 TRUXTON MILEPOST 94

- Historic Frontier Motel & Cafe

9 PEACH SPRINGS MILEPOST 103

- Hualapai Indian Reservation/ Cultural Center
- Hualapai Lodge and Restaurant
- Gateway to Grand Canyon West/Skywalk
- Osterman Service Station

10 GRAND CANYON CAVERNS MILEPOST 115

- Natural Limestone Caverns
- Spend the night 210' below ground
- Motel, RV Park & Restaurant

11 SELIGMAN EXITS 121-123 MILEPOST 140-141

- Birthplace of Historic Route 66
- Iconic Snow Cap Drive-In
- Historic Angel's Barber Shop Museum & Visitor Center

12 CROOKTON EXIT 123

- Beginning of longest remaining stretch of Route 66 to Crookton Rd.
- Historic town

13 ASH FORD EXITS 146-147

- Flagstone
- Ash Fork Motel

14 WILLIAMS EXIT 165

- Gateway to Grand Canyon
- Cruise the Grand Canyon
- Canyon Co. Motel
- Bearizona

15 PARKS EXIT 178

- General Store
- Post Office

16 FLAGSTONE EXITS 195-196

- Train Station
- Historic Downtown
- Lowell Observatory
- Museum of the Grand Canyon
- Pioneer Motel
- Northern Arizona
- Snowbowl
- Riordan Motel
- Three Nations
- Walk the Trails



ROOKTON RD.

EXIT 139

Beginning/End of the longest
uninterrupted continuous stretch of
the I-66 to CA border (158 miles)
Historic train bridge

ASH FORK

EXITS 144-146

Marble Capital of the U.S.
Marble Fork Museum & Visitor Center

17 TWIN ARROWS EXIT 219

• Twin Arrows Trading Post Ruins

18 TWO GUNS EXIT 230

• Two Guns Tourist Attraction ruins

19 METEOR CRATER EXIT 233

• Best preserved meteorite
impact site
• Meteor Crater Discovery Center

22 HOLBROOK EXIT 289

• Navajo County Historic
Courthouse & Museum
• Wigwam Motel
• Gateway to the Petrified Forest
& Painted Desert

23 PETRIFIED FOREST/ PAINTED DESERT EXIT 311

• Museum with fossils & artifacts
• Painted Desert
• Route 66 Interpretive Shop
• Painted Desert Trading Post





Wigwam Motel

An Pham

Route 66 Eastern Adventure Itinerary

Morning

Start at Petrified Forest National Park

Begin your journey exploring this ancient wonderland of fossilized trees and colorful desert landscapes. Take a scenic drive through the park and stop at the **Painted Desert Inn** for photos.

Midday

Holbrook – Wigwam Motel

Snap a photo with the iconic teepee-shaped motel rooms. For lunch, grab a bite at a local diner.

Jack Rabbit Trading Post

Don't miss this quirky, vintage stop. Say hello to the giant rabbit and grab a classic souvenir.

Afternoon

Winslow – Standin' on the Corner Park

Stretch your legs, take that famous “standing on the corner” photo, and enjoy a treat from the **Sipp Shoppe**.

Evening

Arrive in Flagstaff

Wander the vibrant historic downtown filled with unique shops, cozy restaurants, and lively breweries.

If you have more time, consider adding these attractions:

- Explore the **1898 Courthouse Museum** in **Holbrook**
- Dine at **The Turquoise Room** and visit the **Affeldt Mion Museum** in **Winslow**
- Visit **Lowell Observatory** in **Flagstaff**



Billboard at Jack Rabbit Trading Post



Winslow



Lowell Observatory in Flagstaff

Photo Courtesy of Lowell Observatory



Bearizona Wildlife Park

Route 66 Scenic Stretch Itinerary

Morning

Williams – Poozeum

A fun and quirky museum devoted to—you guessed it—fossilized poop!

Crookton Road to Seligman

Exit I-40 at **Crookton Road** (exit 139) and take the longest remaining uninterrupted stretch of Route 66 (158 miles). Keep an eye out for nostalgic **Burma Shave** signs.

Midday

Seligman – Angel & Vilma’s Original Route 66 Gift Shop & Snow Cap Drive-In

A visit to Seligman isn’t complete without a stop at **Angel & Vilma’s Original Route 66 Gift Shop**. This is where the rebirth of Route 66 began. Enjoy some laughs and classic diner fare at this kitschy, must-see landmark of the **Snow Cap Drive-In**.

Hackberry General Store

Stop for vintage gas pumps, Route 66 memorabilia, and a taste of old-school Americana.

Afternoon

Giganticus Headicus

Take a quick photo with this surreal roadside sculpture at Antares Point.

Kingman – Visitor Center, Locomotive Park & Downtown




Dive into Route 66 history at the **Kingman Visitor Center** and explore charming shops and cafés downtown.

Evening

Cool Springs & Oatman

Enjoy a scenic drive through **Sitgreaves Pass** to reach **Oatman**, a former mining town now famous for its free-roaming burros.

If you have more time, consider adding these attractions:

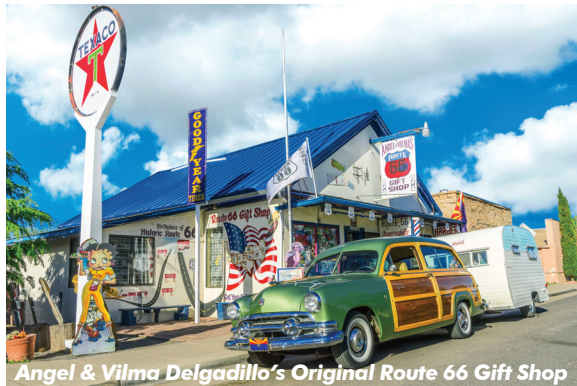
-  Take a ride on the **Grand Canyon Railway** or the **Canyon Coaster** in **Williams**
-  Create a custom souvenir at the **Aztec Motel** gift shop in **Seligman**
-  Travel to the western terminus of Arizona Route 66 in **Topock** and dine at **Topock66** by the river.

Central Section

Welcome to the Central Section of Arizona's Route 66, where you will find a perfect balance of history, culture and outdoor adventure. Home to a rich and diverse past, this section is filled with gorgeous vistas, high mountain peaks, thriving small towns and walkable downtowns. The Central Section rambles through the towns of **Seligman**, **Ash Fork**, **Williams**, beautiful **Flagstaff** and **Winona**.

SELIGMAN

Seligman keeps Route 66 history alive with a collection of restored buildings and its charming main street that has stood the test of time. A stop at **Angel & Vilma Delgadillo's Original Route 66 Gift Shop** has become a pilgrimage for Route 66 travelers. The mannequin-decorated **Rusty Bolt**, the **Return to the 50s**, the **Motoporium** — formerly the **Copper Cart Restaurant** — the **Route 66 RoadRunner** all offer an eclectic shopping experience with Route 66 memorabilia, vintage cars and life-size statues on display. The **Snow Cap Drive-In**, an outlandishly decorated diner is labeled the funniest food spot on 66. The **Roadkill Cafe**, whose theme of “You kill it, We grill it”, will have you having as much fun ordering your food as eating it. Leave room for **Westside Lilo's Cafe's** famous giant cinnamon rolls and carrot cake.



Angel & Vilma Delgadillo's Original Route 66 Gift Shop

Efren Lopez



Roadkill Cafe

Efren Lopez



Snow Cap Drive-In

Efren Lopez

ANGEL DELGADILLO - MODERN-DAY CULTURAL HERO

Angel Delgadillo, born in Seligman in 1927, saw firsthand the various incarnations of the Mother Road: the Dust Bowl migration, the movement of equipment and troops during World War II, to families taking to the road en masse on vacation. He also saw the devastating effect that Interstate 40 had on his hometown; businesses closed, buildings were abandoned, and people moved away. However, the Delgadillo family did not. Angel rallied local residents to petition the State of Arizona to designate Route 66 as a Historic Highway. In 1987, Seligman became known as the ‘Birthplace of Historic Route 66’. A full-throttle Route 66 revival was born. Today, Delgadillo, fondly referred to as *The Father of the Mother Road*, *The Guardian Angel of Route 66*, and *Mayor of the Mother Road*, has since retired as a barber. Adoring fans from across the globe visit his gift shop for a glimpse of, or if lucky, a story filled moment with the man who inspired a community, the nation and the world to preserve a piece of America’s motoring history.



Imagine Photography

Angel Delgadillo



ROUTE 66 KICKS

Originally established as a railroad town, Seligman was named after Jesse Seligman, a railroad financier from New York, for his contributions in financing the railroad.

STAY

- **Aztec Motel** – Built in 1915 as a guest house, the motel was reburbished in 2021 keeping the mid-century modern style rooms.
- **Historic Route 66 Motel** – Themed rooms with memorabilia and a classic neon sign pay tribute to the Mother Road.
- **Supai Motel** – A historical landmark on Route 66, the Supai offers an authentic motor lodge feel with its 15 rooms and soaring neon sign.
- **Stagecoach 66 Motel** – This 1960s motel is the largest motel in town with 40 rooms. Themed rooms and a distinctive neon sign call out to yesteryear.

DON'T MISS

- **In 2026, the Seligman community will debut large monument signs on either end of town proclaiming their right as the Birthplace of Historic Route 66.**



David Schwartz

Historic Route 66 Motel



Efren Lopez

Stagecoach 66 Motel



Travel Tip: A multitude of tour buses descend on Seligman early to mid-afternoon. To have an uninterrupted experience of the town, mornings are the best.

CENTRAL SECTION

ASH FORK

History buffs, stop by Ash Fork to explore the historic buildings and Ash Fork Settlers' Cemetery. Established in 1911, the Cemetery is filled with old west grave sites marked by wooden crosses, etched sandstone, iron baby cribs. Mother Road enthusiasts will also enjoy the **Ash Fork Route 66 Museum**, housed in a 1926 Moenkopi sandstone building which was the Ash Fork Maintenance Camp #1 for Hwy 66 and SR 89. The Museum features model displays from Ash Fork's past, the town's first jail, and town memorabilia to admire.

Did You Know?

Ash Fork is known as the Flagstone Capital of the World from the large number of flagstone quarries around the town.



An Pham



Ashfork Historical Society

Ash Fork Historic Walk



An Pham

AZ Route 66 Visitor Centers & Museums

Historic Route 66 Association of Arizona

120 West Andy Devine Ave.
Kingman, AZ 86401
928-753-5001
info@historic66az.com
historic66az.com

Oatman Goldroad Chamber of Commerce

P.O. 423
Oatman, AZ 86433
928-788-2011
oatmanchamberofcommerce.com

Arizona Route 66 Museum

Kingman Visitor Center
120 West Andy Devine Ave.
Kingman, AZ 86401
928-753-9889
mohavemuseum.org

Kingman Visitor Center

120 West Andy Devine Ave.
Kingman, AZ 86401
928-753-6106
explorekingman.com

Angel & Vilma Delgadillo's Original Route 66 Gift Shop

22265 West Historic Route 66
Seligman, AZ 86337
928-422-3352
route66giftshop.com

Ash Fork Historical Society & Museum

901 West Old Route 66
Ash Fork, AZ 86320
928-637-0204

Williams Visitor Center

200 West Railroad Ave.
Williams, AZ 86046
928-635-4061
experiencewilliams.com

Flagstaff Visitor Center

1 East Route 66
Flagstaff, AZ 86001
928-213-2951
flagstaffarizona.org

Winslow Chamber of Commerce & Visitor Center

523 West 2nd St.
Winslow, AZ 86047
928-289-2434
winslowarizona.org

Affeldt Mion Museum

Located inside the La Posada
303 E 2nd Street
Winslow, AZ 86047
928-289-4366
ammwsa.com

Holbrook Chamber of Commerce

100 East Arizona St.
Holbrook, AZ 86025
928-524-6558
holbrookazchamber.com

Painted Desert Visitor Center

1 Park Rd
Petrified Forest N.P., AZ 86028
928-524-6228
nps.gov/pefo



Williams

As the last Route 66 town to be bypassed by the Interstate, Williams still maintains its nostalgia and spirit of a bygone era. Make your first stop the **Williams Visitor Center and Museum**. Located in the old freight railroad depot, enjoy the interpretive exhibits that share the history of Route 66, Williams and environs. Books and maps are also available. Then take a stroll down Williams' **Historic Downtown District**, which spans six square blocks with two Route 66 main streets, one eastbound and the other west bound. Explore the main streets lined with old brick commercial buildings dating from the late 19th century, **quirky hotels, diners, cafes, breweries** and one-of-a-kind **gift shops**. If you are in town between Memorial Day and Labor Day, don't miss the nightly entertaining shoot-out, reminiscent of the wild west, gunslingers, saloons and gun fights. Williams' location offers plenty of outdoor fun. Get up close and

personal with wildlife at the **Bearizona Wildlife Park** or explore the **Kaibab National Forest**, which has a variety of trails to get your step count in. **Camping, fishing or golfing**, take your pick, Williams has it all. Known as the gateway to the **Grand Canyon**, Williams serves as a great place to launch your venture to the **Grand Canyon South Rim**. This historic town is also home to the world-famous **Grand Canyon Railway and Resort** where you can hop aboard an old Diesel powered train for a scenic two-hour ride to the Grand Canyon (steam locomotives are used on special occasions). The on-board live music and staged train robberies will certainly make for a memorable trip.

Did You Know? Founded in 1881, Williams was named for the famous trapper, scout and mountain man, "Old Bill Williams." A statue of "Old Bill" stands in Monument Park.

EAT

- **Red Raven** – Route 66 restaurant with a intimate artsy setting serving eclectic globally inspired fair.
- **Pine Country Restaurant** – Serving homemade pies and a variety of comfort foods.
- **Cruiser's Route 66 Cafe** – a 1930s filling station turned cafe in the heart of Downtown Williams featuring smoked BBQ and diner favorites.

DO

- **Bearizona Wildlife Park** – View wildlife in spacious and natural environments in this drive thru nature park. Features a 3-mile drive and a 20 acre walk-thru experience.
- **Canyon Coaster Adventure Park** – Enjoy the scenery on your way up, then control your speed down this family-friendly, mile-long mountain coaster.
- **Kaibab National Forest** – Hike, bike, fish or picnic at the Williams Ranger District of the Kaibab Forest, which encompasses 550,411 acres of natural beauty with diverse flora and fauna.
- **Grand Canyon Railway** – Experience the romance of travel by train to the heart of the Grand Canyon. The 65 mile train ride takes two hours and 15 minutes each way.



Efren Lopez

Cruiser's Route 66 Cafe



Bearizona Wildlife Park



Grand Canyon Railway



Efren Lopez

Flagstaff has plenty to offer Route 66 fans as the “only 7,000-foot elevation, pine-fresh, dark-sky city on the Mother Road.” The city earned its name in 1876 when Boston settlers raised a U.S. flag on a pine tree to mark the nation's centennial. Today, more than 5 million visitors come each year thanks to its proximity to **Grand Canyon National Park** and other attractions. Flagstaff features 14 miles of original Route 66. BNSF and Amtrak trains still rumble through town, and the **Flagstaff Visitor Center**, located in the **Historic Train Station at 1 E. Route 66**, is a great stop to learn about the area and watch trains. Visitors can also explore Route 66 history on the **Walk this Talk Tour**, narrated by actor Ted Danson. A self-guided stroll through the historic Southside Neighborhood highlights old motor lodges and amenities built along the route. Don't miss the **Museum Club**,

Riordan Mansion, Museum of Northern Arizona, and **Lowell Observatory's new Astronomy Discovery Center** with an open-air planetarium. Outdoor lovers will enjoy access to nine national parks and monuments within a two-hour drive. Craft beer fans can sample local brews at eight award-winning breweries.

Travel Tip: Explore the **Flagstaff Selfie Trail:** 15 locations throughout Flagstaff, marked with a metal ground medallion, for Instagram worthy selfies.

EAT & DRINK

- **Route 66 Dog Haus** – This A-framed building dating to the 1960s stands out with its bright red and yellow color scheme and drive-thru in the middle of the building. Come for the food, stay for the history regarding the Eagles' classic “Take it Easy.”

- **Miz Zip's Route 66 Cafe** –A Flagstaff staple since the 1950s with burgers, pies and loads of Route 66 charm.
- **Lumberyard Brewing Company** – Craft brews are the highlight of this rehabilitated Halstead Lumberyard building, with elevated pub fare like the Green Dragon Mahi Sandwich to make a stop memorable.
- **Mother Road Brewing Company** – Once home to a commercial laundromat serving Route 66 accommodations, this brewery now serves the top-rated IPA in the state, Tower Station, named after another Route 66 icon.

SEE

- **Wupatki National Monument** — Just 30 minutes from town, these ancient pueblos teach visitors about the earliest inhabitants of the Colorado Plateau. As a bonus, fans of the road-trip movie “Easy Rider” might recognize locations in the film shot in and around the park.
- **Route 66 Mural** — Painted on the back of Lumberyard Brewing Company along Phoenix Avenue, this massive painting depicts the westward migration many experienced throughout time on Route 66.
- **Americana Motor Hotel** — This newly refurbished Route 66 property has a throwback design and U.S. astronaut statue welcoming guests, a nod to the city’s history of hosting every astronaut who has walked on the moon, as well as those preparing for future missions.
- **Arizona Snowbowl** — Winter skiing and snowboarding are the primary draw, but even less-adventurous sightseers can enjoy a scenic ride in the gondola with views all the way to Grand Canyon on clear days.



Efren Lopez



Hotel Monte Vista



Efren Lopez

Galaxy Diner

CENTRAL SECTION

WINONA

Mentioned in Bobby Troup's famous song, *(Get Your Kicks) on Route 66* with the line, 'Don't forget Winona,' the unincorporated town of Winona got its start as the **Winona Trading Post** by Billy and Myrtle Adams in the early 1900s. While the trading post isn't in operation today, its building remains with its garage still in use. Though closed, the **1924 Walnut Canyon Bridge** sits intact on a short stretch of abandoned roadbed as a proud reminder and makes for a great photo op.

1924 Walnut Canyon Bridge



Central Section Points of Interest



- Seligman
 - Angel & Vilma Delgadillo's Original Route 66 Gift Shop
 - Burmashave Signs
- Ash Fork
 - Ash Fork Route 66 Museum
 - Settlers' Cemetery
- Williams
 - Historic Downtown District
 - Williams Visitor Center
 - Bearizona Wildlife Park
 - Grand Canyon Railway
 - Canyon Coaster
- Parks
- Flagstaff
 - Flagstaff Visitor Center
- Walk This Talk Tour
- Museum Club
- Lowell Observatory
- Riordan Mansion
- Museum of Northern Arizona
- Winona - Walnut Canyon Bridge

Side Trips

- Grand Canyon National Park
- Kaibab National Forest
- Arizona Snowbowl
- Wupatki National Monument

EASTERN SECTION

Welcome to the Eastern and final section of Arizona's Route 66. Here, you will travel through some of Arizona's most beautiful and quiet stretches of road—ideal for getting off the beaten path and diving into a mix of quirky and historic. This region offers access to natural wonders like the otherworldly landscapes of **Petrified Forest National Park**, the awe-inspiring **Meteor Crater**, and the culturally rich **Homolovi State Park**. Route 66 follows **Meteor City**, **Winslow**, **Joseph City**, and then **Holbrook** to **Lupton**. Take your time exploring, set off down a dirt road, chat with the locals, or soak up the surroundings—we promise that you will not be disappointed.

METEOR CITY

Named for nearby **Meteor Crater**, **Meteor City** began in 1938 as a Texaco station. A shop was added in 1941, and in 1979 the iconic beige geodesic dome with a yellow mohawk replaced the original structure. Now known for a 100-foot-long hand-painted Route 66 map, the post became a nostalgic roadside stop. After a fire in 1990, the current dome was built. In 2016, new owners began restoring the property to its former charm. Visitors can visit the gift shop, western town and see some 30 dinosaurs roaming the property.

METEOR CRATER

About 50,000 years ago, a meteorite struck the Earth at over 26,000 mph, forming what is now one of the best-preserved meteorite impact sites in the world. Nearly a



Meteor Crater

Ani Photo



Homolovi State Park



Petrified Forest Nat. Park

mile wide and 500 feet deep, **Meteor Crater**—also known as Barringer Crater—was once mistaken for a volcanic site. It played a role in NASA’s Apollo training during the 1960s. Today, a visitor center offers interactive exhibits, a theater, and sweeping views from the crater’s edge.

PETRIFIED FOREST NAT. PARK

Once a lush prehistoric floodplain, this area now contains one of the world’s largest concentrations of petrified wood. Fossilized trees, exposed by erosion, shine with quartz, amethyst, and agate. Visitors can also see ancient Puebloan ruins, petroglyphs, and remnants of old Route 66—including a rusting 1932 Studebaker parked along the historic alignment. Designated a national monument in 1906 and later a national park in 1962, this landscape tells stories that span hundreds of millions of years.

HOMOLOVI STATE PARK

Meaning “Place of the Little Hills” in the Hopi language, **Homolovi State Park** preserves the remains of ancestral Hopi villages from A.D. 1200–1400. Excavations have revealed pottery shards, stone tools, and pueblo outlines, offering insight into the cultural journey of the Hopi people. Established in 1993, the park serves as both an archaeological preserve and a place of quiet reflection. Interpretive trails and a visitor center help tell the story of this sacred landscape.

Travel Tip: Many vacated roadside attractions are on private property. When exploring ruins, use caution. Please be aware that there may be debris such as broken glass, nails, rusted metal and unstable ground.





An Pham

Winslow

The city of 10,000 friendly faces started off as a railroad town and became the largest settlement in northern Arizona due to the railroad and Route 66. However, with the decline of train travel and the construction of the Interstate, the town struggled. Winslow's survival is greatly owed to the lyrics of the Eagles 1972 debut single, *Take It Easy*, which mentions the town's name. Fans of the famous rock band can still enjoy visiting **Standin' on the Corner Park**, which pays tribute to the song with two life size statues: one in honor of Glenn Frey who died in January 2016, and one named 'Easy', plus a two-story mural of a girl in a flatbed Ford. But more than a lyric in a popular song, Winslow offers plenty of fun activities, history and scenic beauty to give you the kicks you are looking for. To start, a visit to the **Winslow Chamber of Commerce Visitor Center**, housed in the historical Hubbell building, is highly recommended, as is a stop in at the **Old Trails Museum**. Both

offer a wealth of information on the town's railroad history as well as the surrounding area. The renovated **La Posada Hotel**, a former Harvey House Hotel designed by architect Mary Jane Colter in 1929, stands proud as a historical monument, offering a luxurious and nostalgic step back in time. The **McHood Park & Clear Creek** offers a beautiful place to swim and canoe if you need to blow off some road travel steam.

Walk where ancient civilizations once trotted at **Homolovi State Park**. Just 15 minutes outside of Winslow, see firsthand the remains of a Homolovi settlement while enjoying the beauty of the desert.

Travel Tip: Less than 30 minutes West from Winslow is the world's best-preserved **Meteor Crater**. The **Meteor Crater Visitor Center** on-site offers a guided rim tour of the crater, along with interesting exhibits and artifacts, including an **Apollo Test Capsule**.

EAT

- **Sipp Shoppe** – Situated right across from **Standing on the Corner Park**, this 50s inspired malt shop is housed in the historic Navajo County Bank Building that was built in 1904.
- **Brown Mug Cafe** – a neighborhood Mexican restaurant established in 1958.
- **The Turquoise Room** – Enjoy an elegant dining experience with a Southwestern twist in the relaxed atmosphere of the historic **La Posada Hotel**.

SHOP

- **Arizona 66 Trading Company**
- **La Posada Hotel Gift Shop**
- **Standin' On The Corner RT66 Gift Shop**

SEE

- **9-11 Memorial and Remembrance Garden** – Dedicated to the tragic events of September 11th. On-site is a display of actual wreckage from the World Trade Center.
- **Affeldt Mion Museum** – See the world's largest single loom Navajo rug, the Hubbell Joe Rug, among other exhibits.
- **Tiny Church of the Mother Road** – Officially known as the smallest church on Route 66, this small shrine sits in a small courtyard a few blocks from **La Posada**. Just big enough to fit two seats with room for a minister, it is lined with panels that tell the history of the railroad, ranchers and Winslow.



Efren Lopez



EASTERN SECTION

JOSEPH CITY

Once a thriving tourist stop, Joseph City is now mainly characterized by private residences. A must-stop roadside attraction is the iconic **Jack Rabbit Trading Post**, in operation since 1949, and owned by the same family since 1969. Famed for the large yellow billboards with a black jackrabbit that taunted Route 66 traveler's back in the day with mileage countdowns, the trading post operates as a gift shop with Route 66 memorabilia, souvenirs and novelties. The large yellow billboard with red letters proclaiming, '**Here It Is!**' is the perfect photo op, as is the large fiberglass rabbit that you can sit on. **Geronimo Trading Post**, which has the world's largest petrified log, sells petrified wood for you to take home.

Efren Lopez



Jack Rabbit Trading Post

Route 66 Trivia

How well do you know The Mother Road? Test your Route 66 knowledge with these trivia questions.

1 Who wrote the 1946 hit (*Get Your Kicks on) Route 66*, which was later made famous by Nat King Cole?

2 Which famous landmark, considered one of the seven natural wonders of the world, will you pass while driving across Route 66?

3 Route 66 is often referred to as 'The Main Street of America', 'The Diagonal Highway' and 'The Mother Road'. However, it owes its most popular designated nickname to a famous cowboy and humorist. Who is he?

4 In what John Steinbeck novel does Route 66 serve as a route for migrants fleeing the Dust Bowl?

5 Comprised of a series of roads, the entire Route 66 was finally paved by what year?

6 In what year did Route 66 bypass the town of Seligman, AZ?

7 John Steinbeck gave Route 66 one of its most famous nicknames. What is it?

8 What famous husband of Carole Lombard shared a honeymoon suite with her in Oatman, AZ?

9 When heading through Arizona you will pass through one of the driest deserts with the prettiest colors. What is it called?

10 When heading through Arizona you will pass through one of two famed National Parks. Name the one that has the most "trees".

11 In what motor court can you sleep in a teepee?

12 Which was the last town to be bypassed by the new Interstate?

13 Which town is known as being in the 'Heart of Historic Route 66'?

14 Which town is known as the 'Birthplace of Historic Route 66'?

15 What really big anniversary will occur in 2026?

Answers:

1. Bobby Troup.
2. The Grand Canyon.
3. Will Rogers. Route 66 is also called The Will Rogers Highway.
4. The Grapes of Wrath.
5. 1938.
6. 1978.
7. The Mother Road.
8. Clark Gable.
9. Painted Desert.
10. Petrified Forest.
11. Wigwam Motel.
12. Williams (1984).
13. Kingman.
14. Seligman.
15. Route 66's Centennial.



Holbrook

Efren Lopez

Holbrook, once declared a town ‘too tough for women and children’, is infused in Native American and a pioneering wild west culture. Its illustrious past includes a famous shoot out that took place in 1887 at **Blevins House** between cattle rustlers and Commodore Perry Owens, the sheriff who brought order to Holbrook. The Blevins House still stands, as does the historic **Bucket of Blood Saloon** location, while the bar, once a popular hangout for cowboys and criminals, is now closed, though the street still bears its name. The centerpiece of the town, the majestic **1898 Courthouse**, is listed on the National Register of Historic Places and houses the official **Arizona Information Center** and the **Navajo County Historical Society’s Museum**. Route 66 runs right through downtown and is flanked by a plethora of kitschy gift shops. Fancy sleeping in a teepee? You can, at the **Wigwam Motel**. Holbrook is also known as the gateway to the **Petrified Forest**

National Park where not only can you view a forest of fossilized logs from a million years ago, but you can also see a protected section of historic Route 66, the Village on the Rio Puerco, — **Puerco Pueblo** for short — a nearly 800-year-old, 100+ room dwelling that was once home to about 200 people and the **Agate House** which was excavated in the 1930s. If you appreciate weird and unusual stuff, **Stewart’s Petrified Wood Shop** is too good to miss, as is the **Painted Desert Indian Center**, a gift shop that has a bevy of colorful statues of dinosaurs and is worth a stop.

Did You Know? The **Wigwam Motel** in Holbrook is one of the last three surviving wigwam villages in the entire country. Immortalized in the Pixar movie *Cars* as the ‘Cozy Cone’, the motel offers a unique one of a kind experience in their concrete 21 feet-wide by 28 feet-high teepees.

SEE & DO

- **Navajo County Historical Society's Museum** – See the spooky old jail from which the courthouse is built around and learn about the history of Holbrook and the surrounding area through numerous exhibits on the lives of the settlers and ranchers.
- **Petrified Forest National Park** – Encompassing 221,390 acres with 50,000 acres designated as Wilderness, you can camp overnight, walk the trails around the park and see the stunning fossils of trees from a million years ago.
- **Painted Desert National Park** – Stretching from the Grand Canyon National Park to the Petrified Forest National Park, this vast landscape, covering 93,500 acres, features hills, slopes and rocks in every hue imaginable.
- **Painted Desert Trading Post** – Opened in the early 1940s selling souvenirs, food, drink and gas, the shell of the trading post now sits on an abandoned stretch of Route 66 in the Arizona desert. Directions for access are posted on the gate.

SHOP

- **Rainbow Rock Shop**
- **Jim Gray's Petrified Wood Co.**
- **DoBell Mineral & Excavations**

Rainbow Rock Shop



Am Pham

Painted Desert National Park



Painted Desert Indian Center



Efren Lopez

EASTERN SECTION

LUPTON

From Holbrook, the old road consists of driving the south and north frontage road and getting on and off I-40 through the communities of **Chambers, Sanders, Allentown** to **Lupton**, a small village famous for its majestic red painted cliffs. In 1905, Lupton became the site of the first Sante Fe Railroad station in Arizona. With Route 66, the town steadily grew to include several gas stations and stores that are now part of the town's past. Still operating is the **Tee Pee Trading Post** nestled in the base of the cliff, where you can purchase authentic Native American crafts, Route 66 memorabilia, souvenirs and enjoy the stunning huge red cliffs.

Efren Lopez



Tee Pee Trading Post

Eastern Section Points of Interest



- Homolovi State Park
- Meteor Crater
- Meteor City
- Winslow
 - Winslow Visitor Center
 - Old Trails Museum
 - Standing on the Corner Park
 - La Posada Hotel
 - 9/11 Remembrance Garden
- Joseph City
 - Jack Rabbit Trading Post
- Holbrook
 - Holbrook Visitor Center & Museum
 - Wigwam Motel
- Chambers
- Sanders
- Lupton – TeePee Trading Post

Side Trips

- Little Painted Desert scenic view
- Petrified Forest National Park
 - Painted Desert Visitor Center
 - Painted Desert Inn
- Dirt Option 66 – I-40 Between Exit 341 and Exit 346

AZ Route 66 Fun Facts

Route 66 is not a straight line, it curves, wriggles and moves with the land, firing the imagination with the freedom and romance of the open road. It has been called 'the most famous highway in the world', and it remains the ultimate road trip. Here are some interesting and fun facts to know about Arizona's portion of the legendary road.

The steel arch of the **Old Trails Bridge** in Topock, Arizona was an engineering marvel, spanning 600 feet and supported the 800 feet bridge that crossed the Colorado River in Topock. The bridge carried traffic until 1948.



The song *Route 66* mentions the following three towns in Arizona: **Winona, Flagstaff** and **Kingman**.

The **Oatman Hotel** used to be called the Durlin Hotel. The name change happened in the late 1960s.

The final section of the entire national length of Route 66 to be bypassed was a six-mile stretch through the town of **Williams**, on October 13, 1984. This historic occasion was marked by a ceremony in Williams in which Bobby Troup sang his famous song *Route 66*.

The **Arizona Divide** in Flagstaff is the highest point of the road in Arizona and all of Route 66 at 7,335 feet, (2,236m).

One in seven accidents in Arizona occurred on Route 66, giving rise to another, less flattering, name for the road: **Bloody 66**.

Angel and Vilma's Barber Shop and Pool Hall in Seligman, Arizona is considered to be the first shop that sold Route 66 merchandise.



Ash Fork Hill, a 1,700 feet (518m) incline near Williams, was one of the steepest sections along the entire length of Route 66. This alignment was officially abandoned in 1964 to the Kaibab National Forest.



The **Oatman Hotel** has a resident ghost that haunts its halls, and while he was an Irish miner named William Ray Flour when he was alive, the locals have given him the nickname, 'Oatie the Ghost.' Oatie met his fate in 1930 from having one too many drinks at the Oatman Hotel.



Holbrook has a street called '**Bucket of Blood Street**' due to a horrific gunfight that occurred there in 1886 at Terrill's Cottage Saloon that covered the floors in blood, which prompted the owners to change the name of the Saloon to 'Bucket of Blood Saloon.' While the bar is gone, the street name stands as a reminder of that day.

The **Barringer Meteorite Crater** was once a lake and on its floor is about 100 feet of lake deposits!

MODERN HOTEL



The **Hotel Monte Vista in Flagstaff** – one of the very few American hotels built entirely from public taxes is also rumored to have otherworldly inhabitants.

Red Garter Inn in Williams – An apparition of a Hispanic girl with long dark hair and dressed in a white nightgown is said to sometimes visit guests.



Cool Springs was blown up for the 1991 movie "Universal Soldier" starring Dolph Lundgren and Jean-Claude Van Damme.

Flagstaff is often referred to as '**The City of Seven Wonders**' because it sits in the midst of the Coconino National Forest and is surrounded by the Grand Canyon, Oak Creek Canyon, Walnut Canyon, Wupatki National Monument, Sunset Crater National Monument and the San Francisco Peaks.



The **Wigwam Motel** in Holbrook is one of only three surviving Wigwam Motels which are located in California, Arizona, and Kentucky. There were originally seven motels in the U.S.

The **World's longest map of Route 66** was once located at the Meteor City Trading Post in Arizona. That title today goes to the 1939 El Trovatore Motel in Kingman, Arizona.

Additional Resources

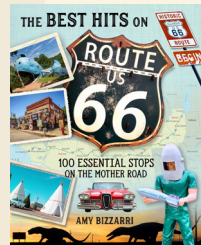
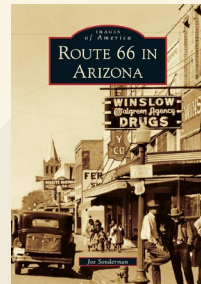


TOOLS & GUIDES AVAILABLE AT HISTORIC66AZ.COM

- *Arizona Route 66 Passport* – A fun way to navigate Route 66 in Arizona and collect stamps at stops along the Mother Road.
- *Guide Along "Arizona's Route 66"* – A GPS guided audio tour to all the best things to see and do. It's like having your own tour guide in your car. Auto-plays as you drive based on your location and direction. Works off-line with GPS, no cellular service, WiFi signal or data required while touring.
- *Mother Road Passport (all 8 states)* – Passport holders collect unique stamps at 44 carefully selected locations on their adventure along Route 66 as well as free souvenirs or discounts.

READ

- *Arizona Kicks on Route 66* by Roger Naylor
- *EZ66 Guide for Travelers* by Jerry McClanahan
- *Moon Route 66 Road Trip* by Jessica Dunham
- *Route 66 in Arizona* by Joe Sonderman
- *The Best Hits on Route 66* by Amy Bizzarri



WATCH

- *Almost Ghosts* – A 2019 documentary film. Directed by Ana Ramón Rubio
- *Cars* (2006) – Animated film. Cars celebrates its 20th anniversary in 2026. Directed by John Lasseter
- *Circle the Wagen* – A 2013 documentary film. Directed by Ryan Steven Green
- *Route 66: An American Odyssey* – A 2002 documentary film. Directed by John Paget
- *The Grapes of Wrath* – A 1940 film adaptation of John Steinbeck's best-selling novel of the same name. Directed by John Ford
- *The Untold Story of Women on the Mother Road* – A 2022 three-part documentary series. Directed by Katrina Parks